

Object ID:	197803
Transaction:	Sale, apartment
County:	Tartu maakond
City/county:	Tartu linn Karlova
Floor:	1
Number of rooms:	3
Type of heating:	central heating
Year of construction:	2008
Readiness:	Completed
Ownership form:	apartment ownership
Cadastral register number:	79508:022:0026
Total area:	98.00 m ²
Area of plot:	0.00 m ²
Sale price:	210 000 €
Price per m ² :	2 143 €

Additional info

basement, bathtub, cable TV, electricity, furniture, Furniture available, internet, stairwell locked, strip flooring, refrigerator, sauna, shower, telephone, washing machine, water, separate WC, furnished kitchen, separate rooms, open kitchen, new sewage system, courtyard, duplex, new wiring, wall cabinets, central water, fenced area, public transportation

210 000 €

Information

A Home with a Sauna Between the School and Kindergarten!

A spacious and bright home has been added to the public listings on the real estate market, nestled amidst greenery.

This is a home located on the elevated first floor of a building, with windows opening in two directions.

Being part of a complex of three buildings, there's plenty of greenery and space for outdoor activities. Additionally, there's no need to worry about street noise or dirt, as they do not reach this courtyard apartment.

The home spans two levels. On one level, there's a shower room, a living room with a kitchen, and a spacious bedroom with enough room for a desk. The other level features an endlessly spacious bedroom with a built-in wardrobe, a toilet, a bathroom with a utility corner, and a sauna.

The sauna room also has the option to install a TV, so you don't even have to leave the sauna bench or bath to watch your favorite shows.

Forselius School is 160 meters from the front door, and Piilupesa Kindergarten is 90 meters away. There's good connectivity thanks to the bus stop in front of the house and the Sadamarauttee light traffic road.

For secure parking, there's a designated spot in the enclosed courtyard according to the notarial usage order. The same applies to a dry and warm storage space with shelves.

Get in touch and ask for more!

Real estate agent



Philip Saksing
 philip.saksing@lvm.ee
 +37253484806

apartment, Tähe 105b

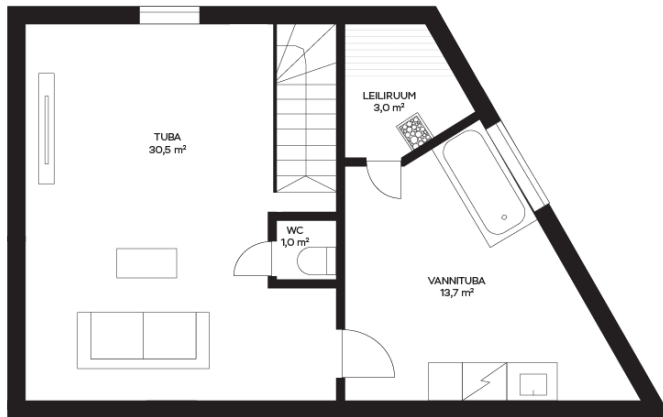








Tähe 105b
soklikorrus



Tähe 105b

