

Object ID:	200756
Transaction:	Sale, apartment
County:	Harju maakond
City/county:	Tallinn Kristiine linnaosa
Floor:	9
Number of rooms:	3
Type of heating:	gas heating, electricalunderfloorheating, hydronicunderfloorheating, air-conditioning
Year of construction:	2022
Ownership form:	apartment ownership
Cadastral register number:	78407:703:0064
Total area:	65.20 m ²
Area of plot:	0.00 m ²
Energy Class:	C
Sale price:	340 000 €
Price per m²:	5 215 €

Additional info

balcony, electricity, elevator, Garage, gas, internet, stairwell locked, strip flooring, refrigerator, shower, telephone, washing machine, water, furnished kitchen, separate rooms, open kitchen, new sewage system, new wiring, wall cabinets, public transportation, forest nearby

340 000 €

Information

3-room apartment on the 9th floor of Järve Tower. Thoughtfully designed layout with an open kitchen-living room, two bedrooms, and a bathroom. The price includes an underground heated parking space and a storage unit!

The apartment and balcony offer views of Tallinn and the sea.

A sun-facing apartment: one bedroom has morning and midday sun, while the living room, kitchen, and the other bedroom have afternoon and evening sun. Sunsets can be seen from the living room and bedroom!

The building was awarded the Concrete Building of the Year title in 2022. Architect: Martin Aunin.

General information:

- 2 bedrooms, spacious kitchen-living room, shower room, and balcony;
- Water-based underfloor heating (gas boiler in the building);
- Electric underfloor heating in the bathroom;
- Heat recovery ventilation;
- Air conditioning;
- 65.2 m², 9th floor;
- 21.5 m² balcony, accessible from the living room and both bedrooms;
- Energy class C;
- Video surveillance.

The kitchen features custom-made furniture, and the flooring is light oak parquet. Built-in furniture remains in the apartment.

Live close to the city center in Kristiine district. Fast and convenient connections to all parts of the city (bus and train). Järve Selver supermarket is 1 km away. Nearby are pine forests and illuminated health trails.

Real estate agent



Kairi Raudla
 kairi.raudla@lvm.ee
 +37256830018

apartment, Järve 2









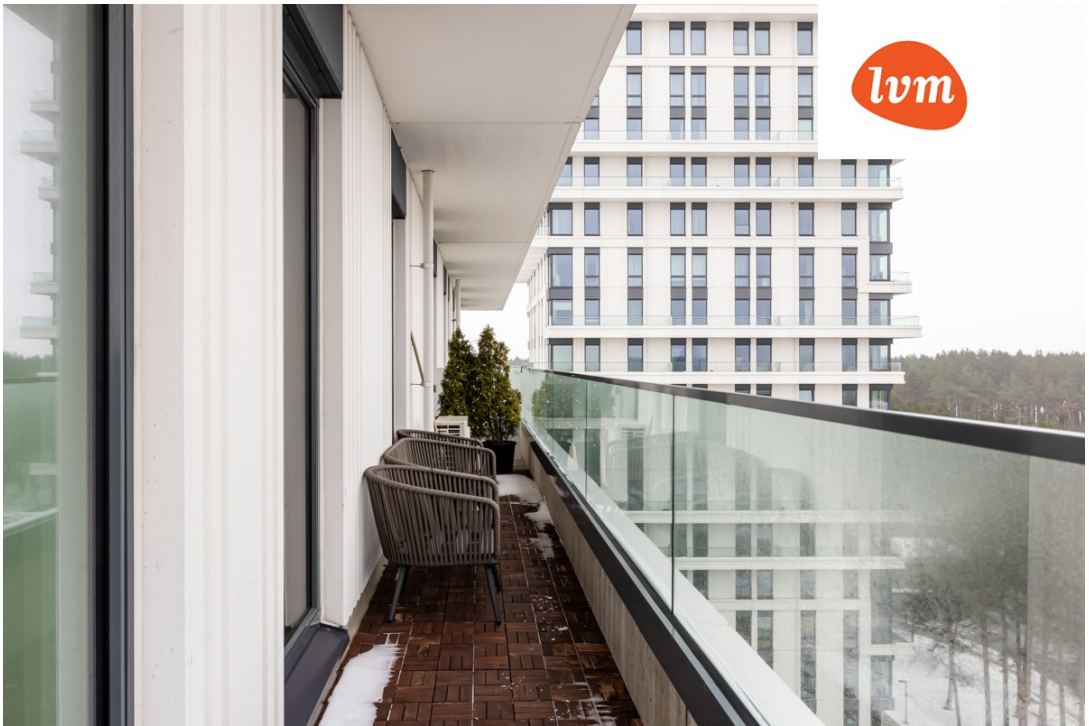


















Järve 2

