

|                            |                     |
|----------------------------|---------------------|
| Object ID:                 | 80437568            |
| Transaction:               | Sale, apartment     |
| County:                    | Tartu maakond       |
| City/county:               | Tartu linn Karlova  |
| Floor:                     | 1                   |
| Number of rooms:           | 3                   |
| Type of heating:           | central heating     |
| Year of construction:      | 2008                |
| Ownership form:            | apartment ownership |
| Cadastral register number: | 79508:022:0026      |
| Total area:                | 98.00 m²            |
| Area of plot:              | 4448.00 m²          |
| Sale price:                | 189 000 €           |
| Price per m²:              | 1 929 €             |

#### Additional information

open kitchen, separate WC, new wiring, refrigerator, bathtub, strip flooring, sauna, cable TV, washing machine, furnished kitchen, shower

189 000 €

#### Information

A Home with a Sauna Between the School and Kindergarten!

A spacious and bright home has been added to the public listings on the real estate market, nestled amidst greenery.

This is a home located on the elevated first floor of a building, with windows opening in two directions.

Being part of a complex of three buildings, there's plenty of greenery and space for outdoor activities. Additionally, there's no need to worry about street noise or dirt, as they do not reach this courtyard apartment.

The home spans two levels. On one level, there's a shower room, a living room with a kitchen, and a spacious bedroom with enough room for a desk. The other level features an endlessly spacious bedroom with a built-in wardrobe, a toilet, a bathroom with a utility corner, and a sauna.

The sauna room also has the option to install a TV, so you don't even have to leave the sauna bench or bath to watch your favorite shows.

Forselius School is 160 meters from the front door, and Piilupesa Kindergarten is 90 meters away. There's good connectivity thanks to the bus stop in front of the house and the Sadamaraudtee light traffic road.

For secure parking, there's a designated spot in the enclosed courtyard according to the notarial usage order. The same applies to a dry and warm storage space with shelves.

Get in touch and ask for more!

#### Real estate agent

**Philip Saksing**  
philip.saksing@lvm.ee  
+372 5348 4806

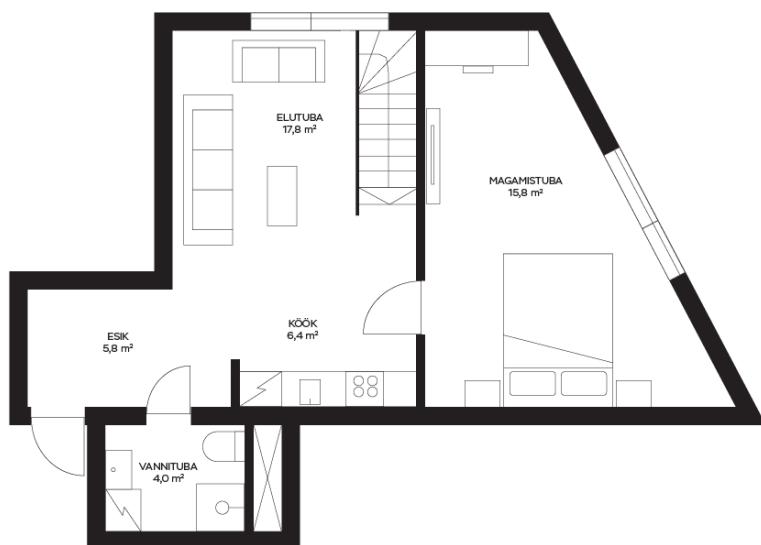
apartment, Tähe 105b







Tähe 105b



Tähe 105b  
soklikorrus

